

NATURAL SURFACE CONTOURS
ARE ALSO THE DESIGN CONTOURS

PACIFIC COAST SURVEYS (Aust) PTY LTD
 3 Elizabeth Street, HERVEY BAY
 Phone: 41249489
 Director: Philip M O'Donoghue
 Email: pssur@bigpond.net.au
 ABN 33 120 271 052
 CONSULTING SURVEYORS

**DISCLOSURE PLAN FOR PROPOSED
ALLOTMENT 99 on SP313313**

TIMBERS RESERVE ESTATE

- This plan shows details of Proposed Allotment 99 on the proposal Plan Dwg No 2912/87, which accompanied the subdivision Application and was approved by Fraser Coast Regional Council

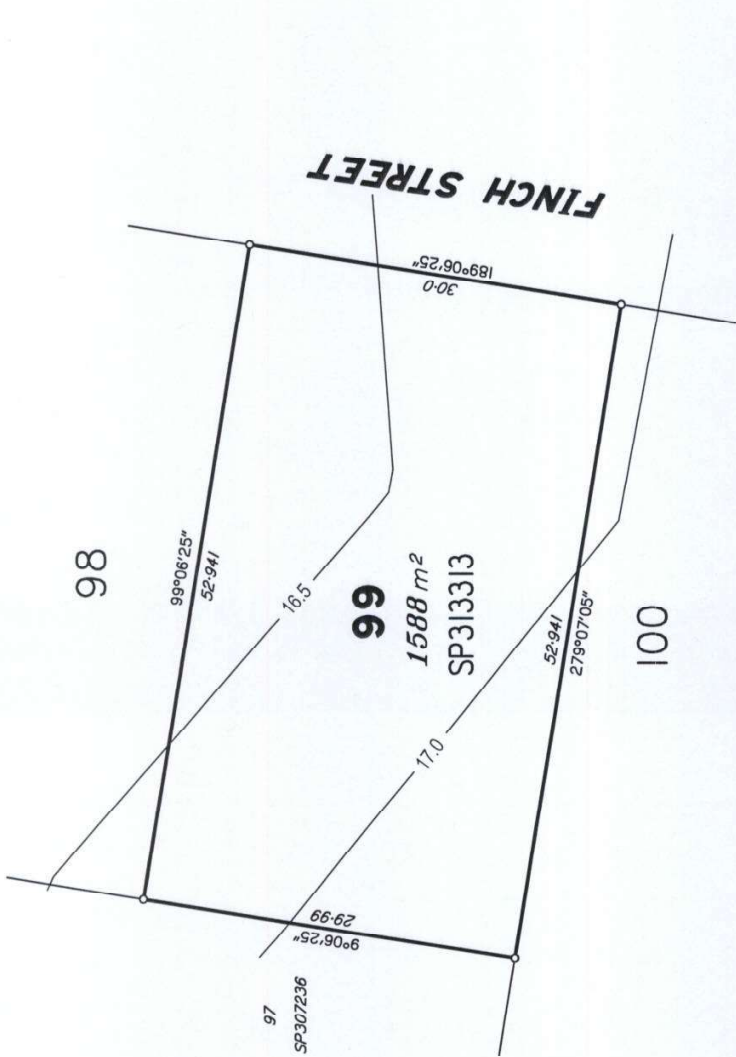
Meridian: - SP307236

Parish	Maryborough
County	March
Locality	Oakhurst
Local Authority	Fraser Coast Regional
Level Datum	AHD
Level Origin	0.5 m
Contour Interval	0.5 m

Drawn	P.O'D	Scale	1:400
Job Number	454801		

LOT 99

Authorised for issue
 Pacific Coast Surveys (Aust) 8/7/20
 Cadastral Surveyor / Director Date



Scale 1:400 - Lengths are in Metres.

The compaction of the fill will be done and tested in accordance with Australian Standard AS 3798-2007 with Levels 1 & 2 Certification.

DESIGNED FILL DEPTHS	DESIGNED CUT DEPTHS	Legend
0.0 m 0.5 m 1.0 m	0.0 m 0.5 m 1.0 m	-UE- Underground Electricity -S- Sewerage -T- Telstra -W- Water -SW- Stormwater -W- Overhead Electricity

-7.5-	DESIGN CONTOUR LINE
	CONTOUR INTERVAL
==	KERB & CHANNEL
-S-(C)	SEWER MAIN
-S-	SEWER MANHOLE
+ 83.77	NATURAL SURFACE LEVEL

+ T.O.W. 7.25 1.0.W.=Top of wall level is 7.25 metres AHDdatum