



PACIFIC COAST SURVEYS (Aust) PTY LTD
 CONSULTING SURVEYORS
 3 Elizabeth Street, HERVEY BAY
 Phone: 41249499
 Director: Philip M. O'Donoghue
 Email: pcsurv@bigpond.net.au

DISCLOSURE PLAN FOR PROPOSED ALLOTMENT 98 on SP313313

TIMBERS RESERVE ESTATE

- This plan shows details of Proposed Allotment 98 on the proposal Plan Dwg No 2912/87, which accompanied the subdivision Application and was approved by Fraser Coast Regional Council

Meridian: - SP307236

Parish	Maryborough
County	March
Locality	Oakhurst
Local Authority	Fraser Coast Regional
Level Datum	AHD
Level Origin	
Contour Interval	0.5 m

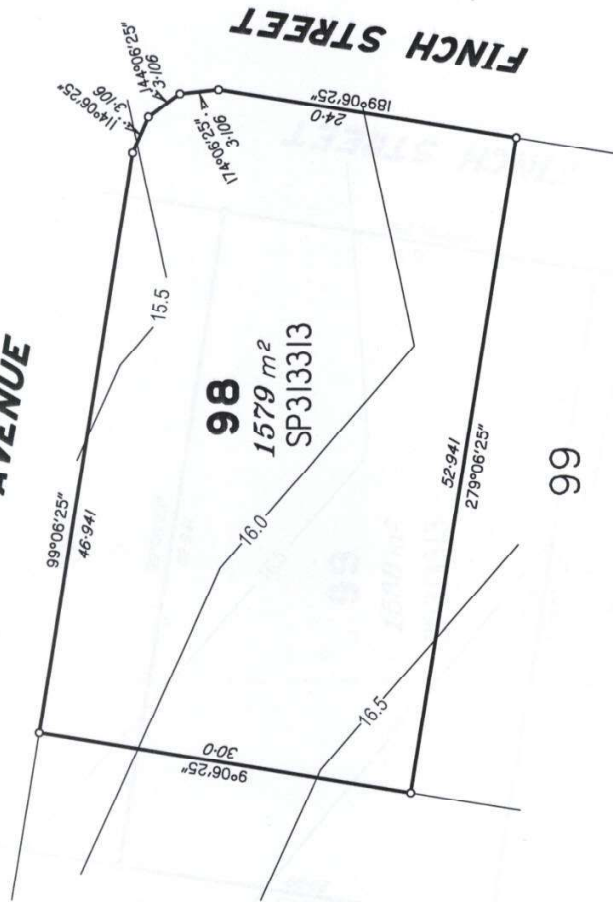
Drawn	P.M.O'Donoghue	8/7/20
Authorised for issue		
JOB NUMBER	454801	SCALE
		1:400

LOT 98

Pacific Coast Surveys (Aust) 8/7/20
 Cadastral Surveyor / Director Date

NATURAL SURFACE CONTOURS ARE ALSO THE DESIGN CONTOURS

BROLGA AVENUE



The compaction of the fill will be done and tested in accordance with Australian Standard AS 3798-2007 with Levels 1 & 2 Certification.

Scale 1:400 - Lengths are in Metres.



DESIGNED FILL DEPTHS	DESIGNED CUT DEPTHS
FILL DEPTH (m) 0.0 m 0.5 m 1.0 m	CUT DEPTH (m) 0.0 m 0.5 m 1.0 m

DESIGN CONTOUR LINE	DESIGN CONTOUR INTERVAL	Legend
— 7.5	—	— UE — Underground Electricity
≡	—	— S — Sewerage
— S —	—	— T — Telstra
— S —	—	— W — Water
— S —	—	— SW — Stormwater
— S —	—	— W — Overhead Electricity

+ T.O.W. 7.25 T.O.W.=Top of wall level is 7.25 metres AHDatum