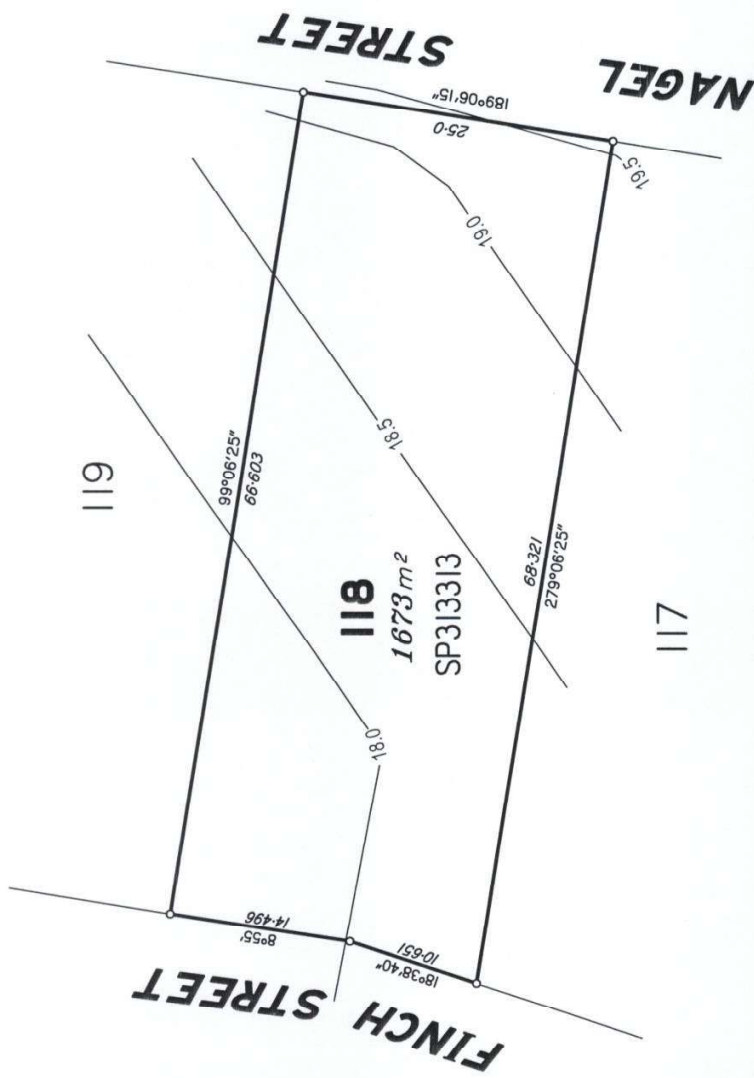


NATURAL SURFACE CONTOURS
ARE ALSO THE DESIGN CONTOURS



The compaction of the fill will be done and tested in accordance with Australian Standard AS 3798-2007 with Levels 1 & 2 Certification.

Scale 1:400 - Lengths are in Metres.



LEGEND

| | | | |
|---------|-----------------------|------|-------------------------|
| — 7.6 | DESIGN CONTOUR LINE | — UE | Underground Electricity |
| — | CONTOUR INTERVAL | — S | Sewerage |
| — | KERB & CHANNEL | — T | Telstra |
| — S — L | SEWER MANHOLE | — W | Water |
| + as.77 | NATURAL SURFACE LEVEL | — SW | Stormwater |
| | | — W | Overhead Electricity |

| | |
|----------------------|---------------------|
| DESIGNED FILL DEPTHS | DESIGNED CUT DEPTHS |
| FILL DEPTH (m) | CUT DEPTH (m) |
| 0.0 m | 0.0 m |
| 0.5 m | 0.5 m |
| 1.0 m | 1.0 m |

PACIFIC COAST
SURVEYS (Aust)
PTY LTD
ABN 33 120 271 052
CONSULTING SURVEYORS
3 Elizabeth Street, HERVEY BAY
Phone: 41249489
Director: Philip M O'Donoghue
Email: pmsur@bigpond.net.au

**DISCLOSURE PLAN FOR PROPOSED
ALLOTMENT 118 on SP313313**

TIMBERS RESERVE ESTATE

- This plan shows details of Proposed Allotment 118 on the proposal Plan Dwg No 2912/87, which accompanied the subdivision Application and was approved by Fraser Coast Regional Council

Meridian: - SP307236

| | |
|------------------|-----------------------|
| Parish | Maryborough |
| County | March |
| Locality | Ookhurst |
| Local Authority | Fraser Coast Regional |
| Level Datum | AHD |
| Level Origin | 0.5 m |
| Contour Interval | |

| | | |
|----------------------|-----------------|--------|
| Drawn | P.M.O. Donoghue | 8/7/20 |
| Authorised for Issue | | |

LOT 118

Pacific Coast Surveys (Aust) 8/7/20
Cadastral Surveyor / Director Date

+T.O.W. 7.25

T.O.W.=Top of wall level is 7.25 metres AHDatum