

DISCLOSURE PLAN FOR PROPOSED ALLOTMENT 100 on SP313313

TIMBERS RESERVE ESTATE

This plan shows details of Proposed Allotment 100 on the proposal Plan Dwg No 2912/87, which accompanied the subdivision Application and was approved by Fraser Coast Regional Council

Meridian: - SP307236

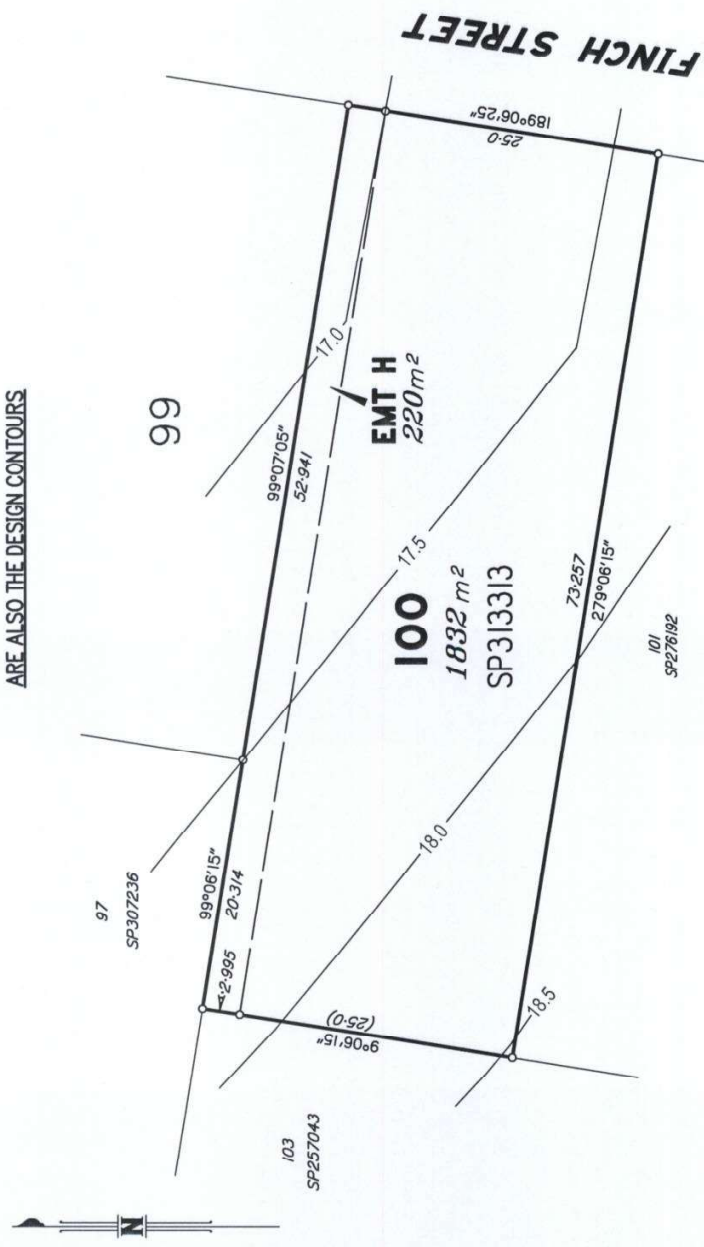
| | |
|------------------|-----------------------|
| Parish | Maryborough |
| County | March |
| Locality | Oakhurst |
| Local Authority | Fraser Coast Regional |
| Level Datum | AHD |
| Level Origin | |
| Contour Interval | 0.5 m |

| | | | | | |
|-------|-------|------------|--------|-------|-------|
| Drawn | P.O'D | JOB NUMBER | 454801 | SCALE | 1:400 |
|-------|-------|------------|--------|-------|-------|

LOT 100

Authorised for issue
P.M. McDonoghue 8/7/20
 Pacific Coast Surveys (Aust) 8/7/20
 Cadastral Surveyor / Director Date

NATURAL SURFACE CONTOURS ARE ALSO THE DESIGN CONTOURS



The compaction of the fill will be done and tested in accordance with Australian Standard AS 3798-2007 with Levels 1 & 2 Certification.

Scale 1:400 - Lengths are in Metres.

| DESIGNED FILL DEPTHS | DESIGNED CUT DEPTHS | Legend |
|-------------------------|-------------------------|---|
| 0.0 m 0.5 m 1.0 m | 0.0 m 0.5 m 1.0 m | UE — Underground Electricity S — Sewerage T — Telstra W — Water SW — Stormwater W — Overhead Electricity |

+ T.O.W. 7.25 1.0.W.=Top of wall level is 7.25 metres AHDatum